

# CBR



**OUR STRENGTH IS IN OUR  
QUALITY**

**ISO Accredited Company**

**ISO 45001**

**ISO 9001**

**ISO 14001**

## INTRODUCTION

### **Compressors Breakdown Repair (Pty) Ltd**

**Compressor Breakdown Repairs (PTY) Ltd** is located in Gauteng and established in 2013.

**Compressor Breakdown Repairs** is situated at **22 Cardiff Avenue, Apex, Benoni**, in Gauteng. Apex is a large industrial area in Benoni and falls under the City of Ekurhuleni. It is a newly build premises and was first occupied September 2019. The property covers an area of 2792m<sup>2</sup>. The property has been designed and constructed to include a double story admin office, a workshop, storeroom and under cover parking. For security we have electric fencing, outside beams and an alarms system.

There are two entrance gates on the premises. Gate one is for staff use as well as visitors, and gate 2 is used for deliveries and easy access for loading or unloading of good and equipment.

The premises is situated between two major freeways, N12 and the N17. This gives us access to all major roads in Gauteng.

Our aim is to serve the industry with quality products, outstanding service and more competitive and affordable prices on all makes of rotary screw compressors, reciprocating units, high pressure units, booster compressors, vacuum pumps, blowers, power generators and transformers including all compressor service parts, electronic / electrical equipment, synthetic and mineral compressor oils, etc.

With more than 35 years experience from the owner , we believe that we have the expertise and knowledge to provide workmanship of the highest quality.

**CONTACT INFORMATION OF THE SITE**

<b>Address</b>	<b>Compressor Breakdown Repairs (PTY) LTD 22 Cardiff Ave Apex Benoni 1502</b>
<b>Postal Address</b>	<b>P.O. Box 10106 Cindapark 1463</b>
<b>Phone (Office Hours)</b>	<b>011 420 1835/36</b>
<b>After Hours Nr</b>	<b>0825696774</b>
<b>E-Mail</b>	<b>Dirk@cbrproducts.co.za support@cbrproducts.co.za</b>
<b>Contact Person</b>	<b>Dirk Botha</b>
<b>Webpage</b>	<b>www.cbrproducts.co.za</b>

***Compressor Breakdown Repairs (Pty) Ltd*** supply, repair and do maintenance on all types of compressors, dryers and vacuum pumps

## Support and Assistance on Compressors

Overhauls and repairs to all makes of Reciprocating / Rotary / Vane Air Compressors (**“Wet” Screws, Vane, Vacuum, Blowers, Reciprocating & Turbo Compressors**).

Servicing and maintenance to all reciprocating / rotary screw Air Compressors (**Electric & Diesel operated**) including Air Vacuum pumps, Blower pumps, Refrigerant and Desiccant Dryers

Maintenance and servicing of all Generator Sets (**electrical & mechanical repairs, including Auto Panels with A.M.F.**).

Suppliers of all make of reciprocating / rotary screw compressors (**2.2kW up to 350kW**) including refrigerant & desiccant air dryers, inline filters, activated carbon filters, auto drains, turbo drains and air or vacuum vessels etc.

All air installations; piping, inline Coalescing filter systems, Air refrigerant – Desiccant / Systems, electronic timed auto drains, turbo drains and all make of rotary screw or reciprocating compressors, vacuum pumps etc.

Warranties will be assess per claim, if all the relevant document are in order. No warranty will be assessed without the client been present.

The following steps will apply:

- Warranty job number will be supplied by storeman
- Appointment will be made with the client to investigate the warranty
- At the meeting the product will be stripped and tested by the quality team while the customer is present
- Once it is determent if it is a warranty, it will be repaired by **Compressor Breakdown Repairs (Pty) Ltd** and ship back to customer once repaired
- Should it be determined it isn't a warranty a new job number will be created and a quote will be sent to the customer. Work will commence once an order number is received from the customer. If not strip and quote invoice will apply.
- VSD installations & Repairs
- Rewiring, restoring, and upgrading of old electrical installations.
- Lead lag panels
- DB Panels

All machines for 3kw to 110kw get tested in our workshop before dispatching back to our client.

- On the Test Bench we test all drill related compressors i.e Sullair,GHH Rand, Ingersoll Rand.
- All CT10,CT16 and CT28 are tested on 525V or 1000V Compressor Breakdown Repairs( Pty) Ltd test all units after assembly

After assembly the units get tested for:

- Oil leaks
- Vibrations
- Any other problems that may occur

We also rebuild Sullair 32 series and Allison Charmers however these can only be tested on the drillrig.

## Use of outside technical assistance

### **S.E.W.L**

Is a specialised company in Electrical and Auto Electrical and deliver the following services to ***Compressor Breakdown Repairs (PTY) Ltd***

- Electrical Panel repairs and fault finding
- Design electrical Panels and build new electrical Panels
- Design PLC Panels and PLC Programming
- Lead Lag system for Compressors & Vacuum pumps.

### **DR Pressure Testing cc**

Is a company that specialising in testing of high-pressure vessels.  
The testing includes the following

- Visual Inspection –
- That Information on the documents correspond with the information on the name plate.
- Thickness Test
- This is to determent the thickness of the tank wall.
- Testing of Safety valve
- Supply of pressure testing certificate that is issued by a registered inspector

## Personnel

***Compressor Breakdown Repairs (Pty) Ltd*** has a comprehensive organization chart  
Key personnel has over 70 years combined experience int the industry and has the following accreditations

- Department of Labour Manpower Training Red Seals Qualification
- N4
- Vessels under pressure and pressure testing
- Certificate Accredited by MERSETA in terms of the Sad Act 97 of 1998 Millwright
- Metal and Engineering Industries Education and Training Board Apprentice Training certification
- Damelin Certificate in Salesmanship
- Damelin Diploma in Production Management
- Certificate Safety Officer
- Certificate Legal Liability
- Certificate Noisetrack
- Certificate Covid19 work place preparation and prevention training
- Certificate Supertrac
- Certificate Inductor
- HASTrack
- FireTrac
- FallTrac
- CONREGS trac
- Claimtrac
- HIRA
- Investrac
- Provisional Risk Manager
- MHSA Legal Liability

## Personnel

**Compressor Breakdown Repairs (PTY) Ltd** has in-house training for all staff members. Training is recorded and registered in our training records. In-house training is done when the need arise, changes in the industry and updates occurs. Training is identified through our quality control system.

As part of **Compressor Breakdown Repairs (Pty) Ltd** health and safety policy all staff will have a take on and exit medical. All staff that is employed under the services department must have an annual medical. The Health and Safety officer is responsible for the health of all employees. Should an employee be ill or injured they should report to their supervisor or first Aider.

Personal Protective Equipment is issued annual but on a need basis as well. Records gets kept and signed on receipt of personal protective equipment.

## Maintenance and Equipment

The equipment used by **Compressor Breakdown Repairs (Pty) Ltd** are suitable for the intended use. All equipment that needs servicing or calibrating certificates issued are recorded in a register. Slings for the cranes and forklift are replaced as per the instructions and history of the equipment. Cleaning can easily be carried out, and cleaning methods are as per the standard procedures and log book for machinery.

Check list are issued by the compliance officer to ensure that all the maintenance are done on time, and for preventative measures. Any defects of failures must be reported immediately. Preventative maintenance is done as this has a direct impact on the quality of the workmanship. All relevant documentation is maintained

The maintenance plan indicates all the details of servicing of the equipment and the details to carry out the maintenance. When outside agencies are required for maintenance, they are identified and their records and certifications are kept on file.

All maintenance records are maintained to use in the history details.

The cranes are load tested and certified annually. The forklift must be checked, load tested, serviced and certified annually. All this is done according to our standard procedures. Cleaning methods is per the standard procedures, and are recorded for production and quality control.

All certifications are kept on record and in our Health and Safety Files as per our Health and Safety Policy.

The company service vehicles gets service when due by the manufacturer. Any defects must be reported immediately to the compliance officer. All vehicles must be road worthy and all drivers must have a valid driver license

## Calibration of equipment

The calibration, re certification, and maintenance of instruments and equipment are carried out as per the makers instructions. On the cranes and forklift we use third party contractor with the correct credentials and qualifications to do the work. All procedures are recorded and records are kept for history

## Documentation

**Compressor Breakdown Repairs (Pty) Ltd** has a well-designed and comprehensive system of documents, effectively followed in each department

Documents are prepared under a standard format and procedure. With revision and distribution control in place that is controlled by the services department and quality system.

Our Quality team are responsible for the arrangement for the preparation, revision and distribution of all necessary documentation to all relevant staff.

Our document system is a manual system with a control policy in place. All document is kept for five years. Should a client require a longer period to store documents will be kept as per the clients request.

The following document are maintained and reviewed routinely:

- Internal requisition
- Orders
- Services status report
- Inspection report
- Self-inspection records
- Training records
- Validation records
- Warranty document
- Analytical reports for Raw material

### **Other documents that are available:**

- work in progress – This relate to all work that is in the process of been done,
- work on site – Work that is done in our workshop
- work off site – Work that is done at our clients site

Calibration and testing document are available from the quality department and hard copies are kept in the Health and Safety files .Details are also recorded in our compliance register

Personal information is stored in accordance with the POPI act of all staff members this includes

- Staff personal information
- Staff training records
- Staff accreditation.
- Staff medicals

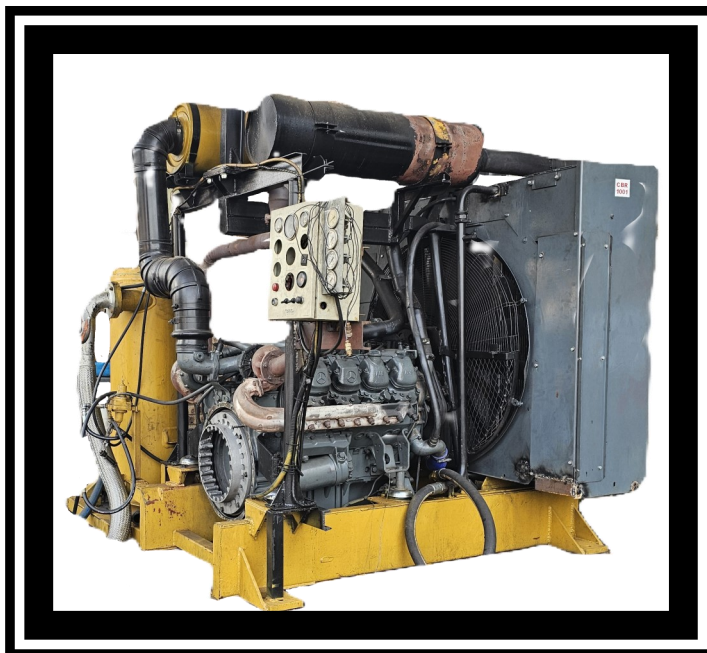
Parts are managed by our buyer and storeman. Documents relating to receiving and return gets up dated as per each order on a daily basis.



## Documents and Policies available on request

- Terms and Conditions
- Policies
  
- ⇒ Health and Safety
- ⇒ Supplier Code of Conduct
- ⇒ Whistle Blowing
- ⇒ Briber and Corruption
- ⇒ Warranty policy
- ⇒ All HR Policies
  
- BEE
- RMA (COID)
- VAT
- Credit Application
- SAPHRA
- CIPC
- ISO 9001:2015 Quality Management System
- ISO 14001:2015 Environmental Management System
- ISO 45001:2018 Occupational Health and Safety

## Test Bench

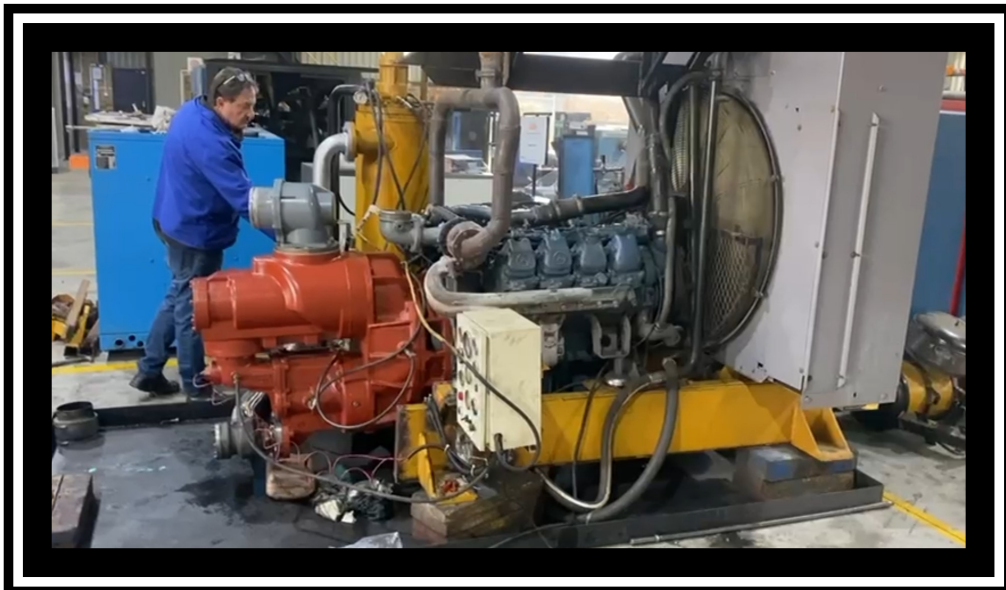




Test Bench without element



Testing in process



Sullair 32 Series 2000CFM unit



Sullair 25 Series 1500CFM unit



Ingersol Rand DM30 1000/21 Bar Unit



GHH Rand 1000/21 Bar Unit



Allison Charmers 3000CFM Unit

